

(Bass Clef version)

Gondwana National Choirs 2018 Auditions Facilitator Sheet

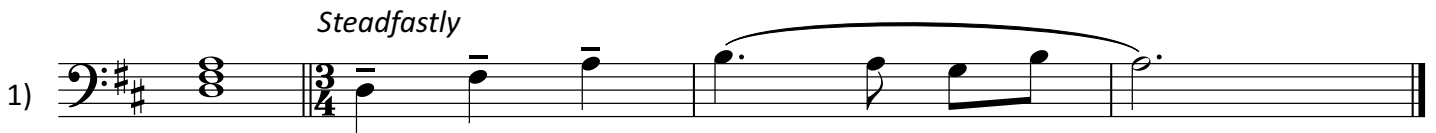
Section 1: Pitch Patterns

I will play some pitch patterns. Please listen to them once and then sing them back to me.
If you would like to hear them again, please ask.



Section 2: Melodic Memory

I will play two short melodies for you. Before I start each one, I will play the tonic chord of the example.
Please listen to the melody twice and then sing it for me. There are no words, so you can sing it to 'lah'



Section 3: Singing the lower part

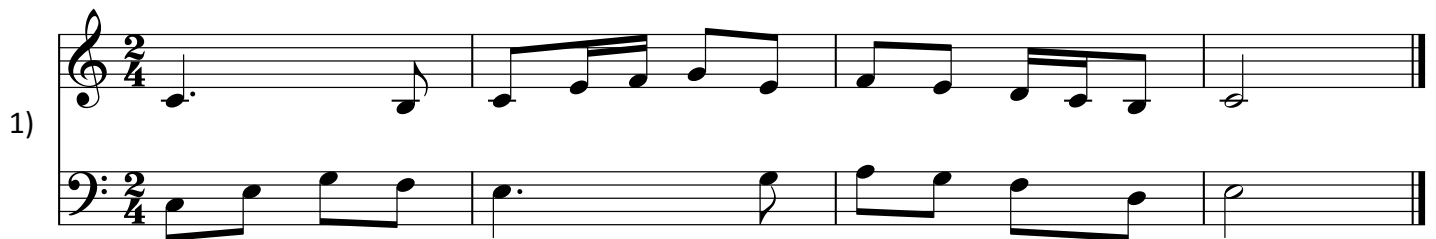
On the sheet you will see a section marked "singing the lower part". You will be singing the lower part of this two part example

This is how the part sounds (*play the lower part*)

A) Sing the part with me as I play (*assist if necessary and repeat as many times as necessary*)

B) Now sing it again whilst I play another part on the piano (*play both hands*)

C) This final time, sing the part alone whilst I play the upper part



Section 4: Sight Singing

On the sheet you will find some sight singing examples.

Have a look at the first exercise. Can you tell me what key it is in?

Here is a C major chord and the starting note (*play the chord and note*). Once you have read through it, I will repeat the starting note and then I would like you to sing it for me.



(If the first sight singing is successful, proceed to the second example)

Have a look at the second exercise. Can you tell me what key it is in?

Here is a D major chord and the starting note. Once you have read through it, I will give you the starting note and then I would like you to sing it for me.



(If the second sight singing is successful, proceed to the third example)

Have a look at the third exercise. Can you tell me what key it is in?

Here is an E \flat major chord and the starting note. Once you have read through it, I will give you the starting note and then I would like you to sing it for me.

