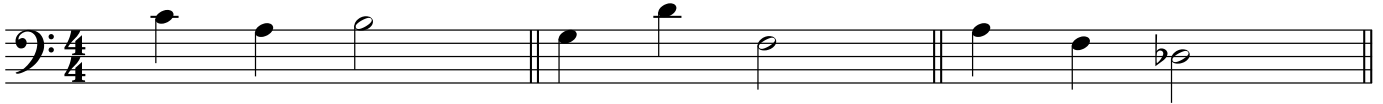


(Bass Clef version)

Gondwana National Choirs 2019 Auditions Facilitator Sheet

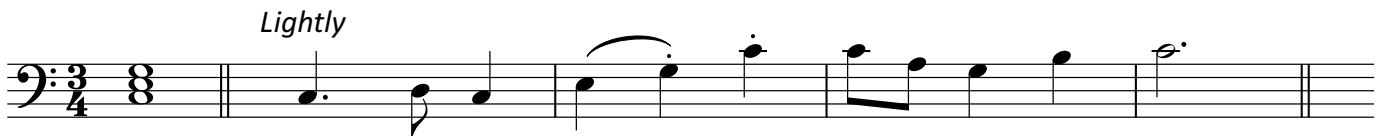
Section 1: Pitch Patterns

I will play some pitch patterns. Please listen to them once and then sing them back to me.
If you would like to hear them again, please ask.



Section 2: Melodic Memory

I will play one short melody for you. Before I start, I will play the tonic chord of the example.
Please listen to the melody twice and then sing it for me. There are no words, so you can sing it to 'lah'



Section 3: Singing the lower part

On the sheet you will see a section marked "singing the lower part". You will be singing the lower part of this two part example

This is how the part sounds (*play the lower part*)

A) Sing the part with me as I play (*assist if necessary and repeat as many times as necessary*)

B) Now sing it again whilst I play another part on the piano (*play both hands*)

C) This final time, sing the part alone whilst I play the upper part

1)

2)

